

WOODCRACKER®

Forest technology & landscape maintenance



WESTTECH



WELCOME TO THE WORLD OF WESTTECH!

Our vision and philosophy

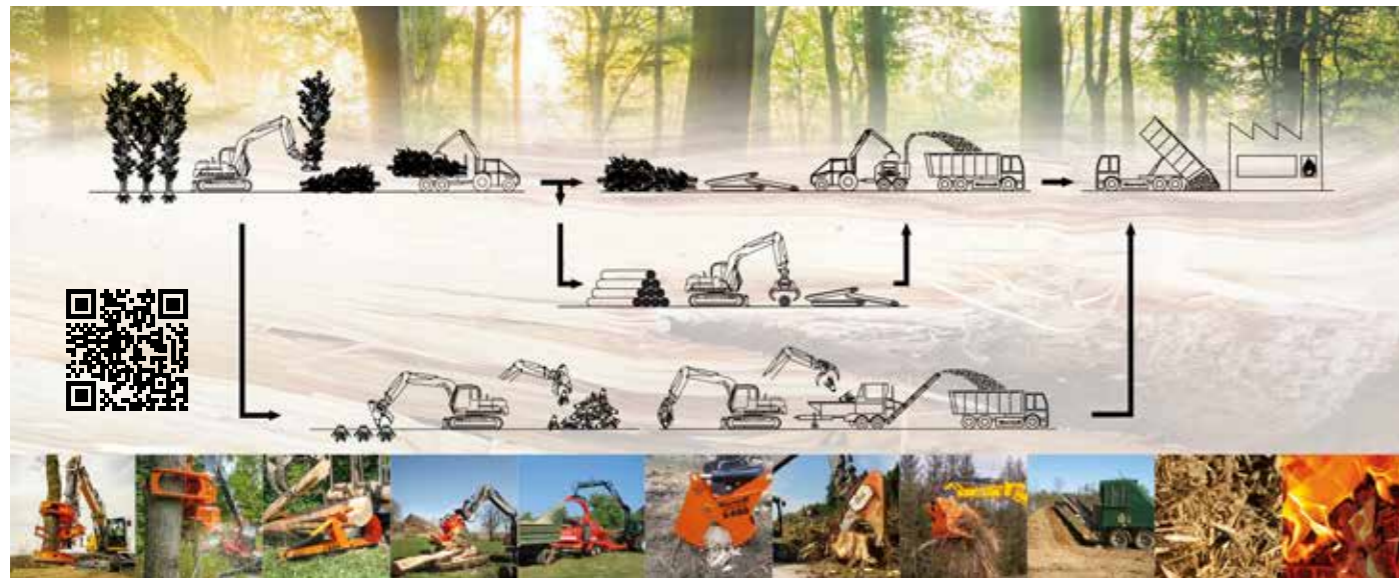
We do more than developing and manufacturing robust **forestry and landscaping equipment**. Individual customer service is our primary factor of success. Every product range is developed by the experienced Westtech team of engineers, always in close collaboration with you - our customers. It is our goal to continuously optimise the product range according to customer requirements and the application areas.

Austrian quality products by Westtech. Development and production from one source guarantee the **highest quality standards** and the associated long service life of the products.

With our products and expertise, we support the entire biomass logistics chain:

BIOMASSE LOGISTICS CHAIN

Harvesting → Storing → Transporting → Shredding → Recovery



CONTENT

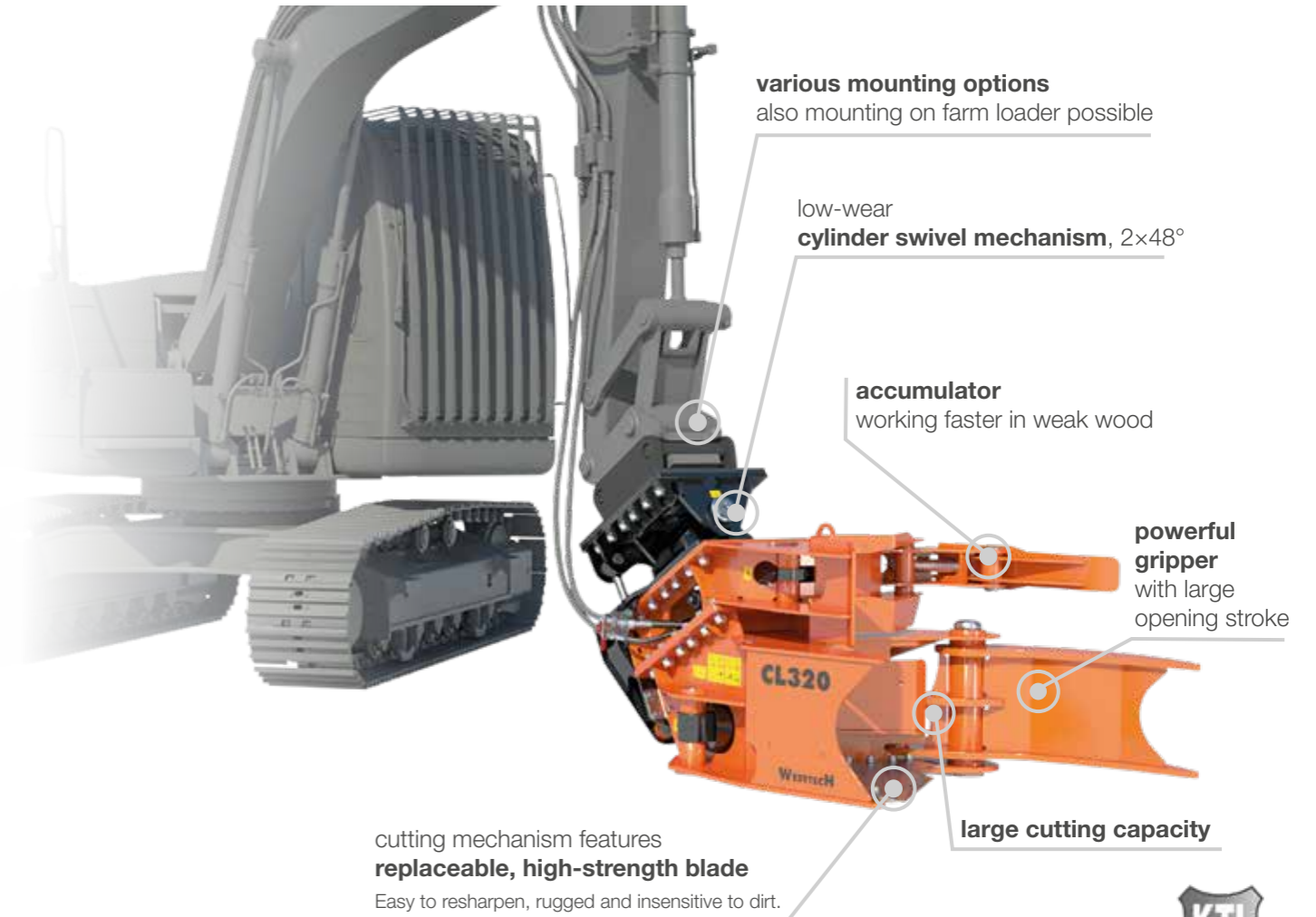
CUTTING		
WOODCRACKER® CL	Cutting head for agriculture and forestry	04 - 07
WOODCRACKER® CB	Cutting head for light material	08 - 11
WOODCRACKER® C	Single grip harvester for safety tree felling	12 - 17
SAWING		
WOODCRACKER® CS crane	Grapple saw for crane attachment	18 - 21
WOODCRACKER® CS compact	Grapple saw for excavator attachment	22 - 25
WOODCRACKER® CS smart	Grapple saw for telescopic handler attachment	26 - 29
WOODCRACKER® CS dualGrip	Grapple saw for safety tree feeling	30 - 33
WOODCRACKER® CS flexHead	Grapple saw for Fellertruck	34 - 37
WOODGRIPPER® WG	Woodgripper with saw unit	38 - 41
ATTACHMENT OPTIONS		
WOODCRACKER® SF	Stepping foot for excavator	42 - 43
WOODCRACKER® T	Telescope stage for excavator attachment	44 - 45
WOODCRACKER® TA	Adapter for telescopic handler attachment	46 - 47
WOODCRACKER® TK	Attachment coupler for excavator	48 - 49
SPLITTING		
WOODCRACKER® L	Wood splitter	50 - 53
WOODCRACKER® W	Wood splitting tongs	54 - 57
CLEARING		
WOODCRACKER® S	Root stock device	58 - 61
WOODCRACKER® G	Clearing rake	62 - 65
WOODCRACKER® R	Root stock clearing device	66 - 69
MULCHING		
MULCHER® M	Excavator-mounted mulcher	70 - 73
WOODCRACKER® HIGHLIGHTS		
	CDP Surface treatment & MIC 4.0	74 - 75
	Woodcracker worldwide	76 - 77
	The Woodcracker Story	78 - 79

WOODCRACKER® CL



WOODCRACKER® CL

CUTTING – Cutting head for agriculture and forestry



KEY FACTS

- Various mounting options (eg. excavator, farm loader).
- Due to low net weight, mountable to farm loaders, telehandlers or wheel loaders.
- Proper and simple connection at the headstock with ideal mounting angle.
- Protected and generously sized hydraulic piping.
- KTL-primed (cathodic dip-coating) and powder coating.
- Made of high-strength Hardox® steel.
- Robust and proven technology – Low-wear and low-service.

The Woodcracker® CL is also attachable to farm loaders.

Caution: Woodcracker® CL is not suitable for dangerous tree felling. Secure grip of cut material can not be guaranteed. In this case we recommend our Woodcracker® C- or CS series.

Equipment variants:



Woodcracker CL260



Woodcracker CL260 + Accumulator



Woodcracker CL260 + Accumulator + Swivel unit



Woodcracker CL260 + Swivel unit



THE FAST AND POWERFUL CUTTING HEAD.



For mini excavators from 2,5t.



Fast harvest of small trees and bushes.

TECHNICAL DATA



WOODCRACKER® CL	CL 190	CL 260	CL 320
Cutting diameter soft wood (mm)	250	320	400
Cutting diameter hard wood (mm)	190	260	320
Gripper opening = shear opening (mm)	685	760	1060
Deadweight (Base – Full equipment) (kg)	210 - 400	360 - 680	620 - 1170
Recommended pump flow capacity main circuit ¹⁾ (l/min.)	40 - 80	50 - 100	70 - 150
Recommended pump flow capacity auxiliary circuit ¹⁾ (l/min.)	20 - 30	40 - 60	45 - 60
Recommended operating pressure main circuit (bar)	250	280	280
Recommended operating pressure auxiliary circuit (bar)	200	200	200
Service weight of carrier vehicle ²⁾ (t)	2,5 - 7,5	6 - 14	12 - 20
Optional: Autospeed	•	•	•
Optional: Cylinder swivel unit	• 2 x 40°	• 2 x 48°	• 2 x 48°
Optional: Accumulator	•	•	•

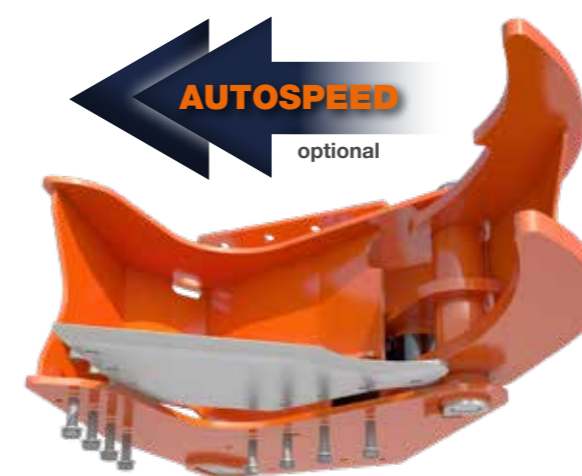
¹⁾ Depending on operating mode or equipment. ²⁾ Depending on carrier vehicle's specifications. • available - not available

APPLICATION AREAS

- Fast harvest of small trees and bushes.
- Harvest of short rotation plantations.
- In rough terrain, hill areas and in bog areas.
- Cultivation and landscape maintenance.
- For agricultural use on a farm loader, telehandler or wheel loader.
- Maintenance measures in swamp areas and along riverbanks.



Optional available with accumulator.



easily replaceable blade



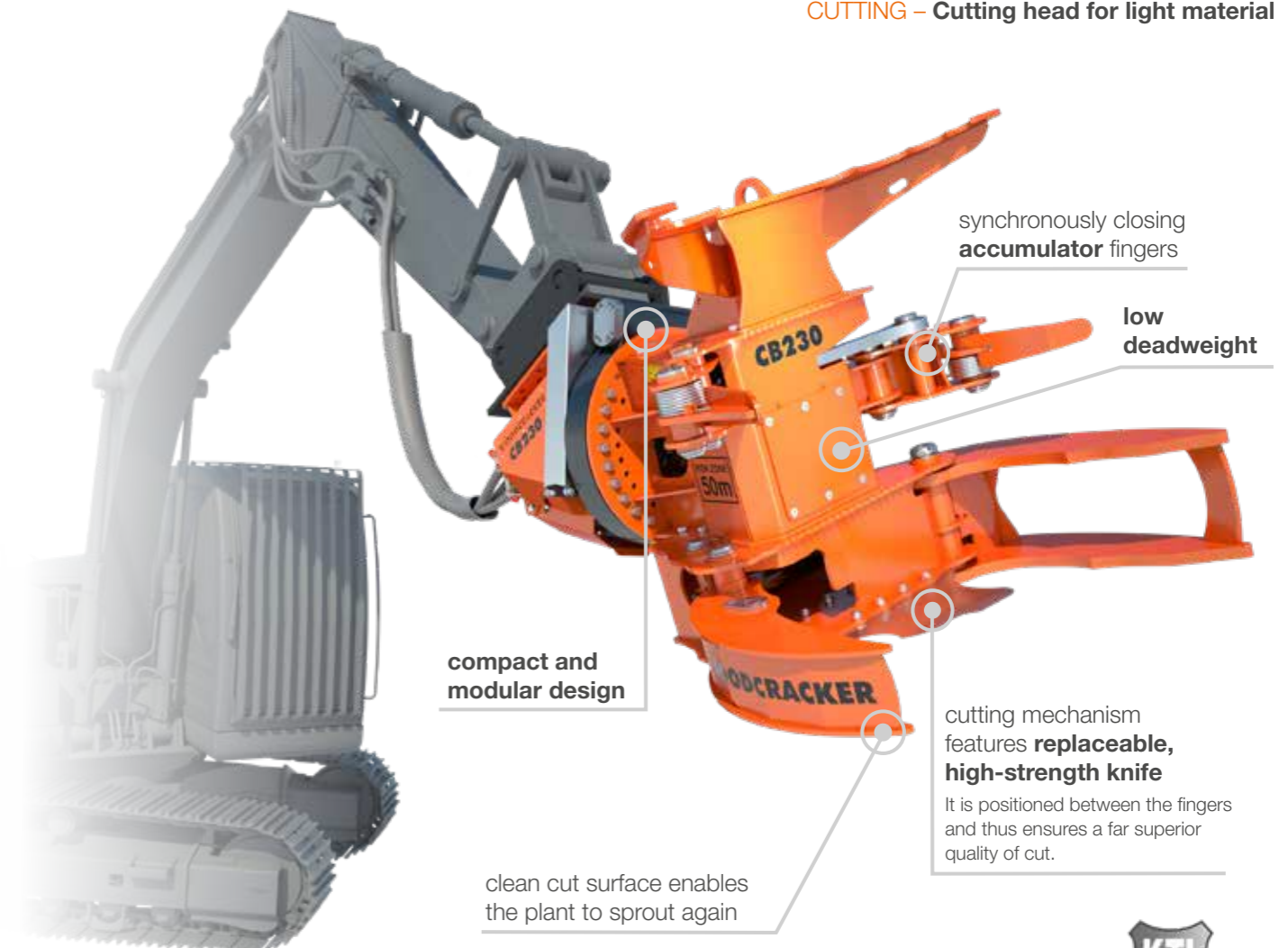
Woodcracker® CL190 cuts weak wood up to 25 cm.

WOODCRACKER® CB



WOODCRACKER® CB

CUTTING – Cutting head for light material



KEY FACTS

- Various mounting options (eg. excavator, farm loader, crane).
- Simultaneous harvest of several trees and bushes in one step using the accumulator saves time.
- Clean cut surface enables the plant to sprout again.
- Large gripper opening of the cutting mechanism.
- Also applicable in mini-forests for easy maintenance.
- Low-service and low-wear due to special cutting system.
- KTL-primed (cathodic dip-coating) and powder coating.
- Made of high-strength Hardox® steel.

OPTIONS

- 3 different mounting options.
- Quick coupler

Caution: Woodcracker® CB is not suitable for dangerous tree felling. Secure hold of cut material can not be guaranteed. In this case we recommend our Woodcracker® C- or CS series.



THE CUTTING HEAD FOR LIGHT MATERIAL.



CB150 crane suitable for forest crane attachment.



ideal for weak material.



Optional with accumulator.



Fast harvest of small trees and bushes.

TECHNICAL DATA



PATENTED

WOODCRACKER® CB	CB 150 crane	CB 150	CB 230	CB 300
Cutting diameter soft wood (mm)	150	220	280	350
Cutting diameter hard wood (mm)	120	170	230	300
Gripper opening = shear opening (mm)	800	800	1100	1280
Deadweight (Base – Full equipment) (kg)	310	300 - 560	470 - 950	900 - 1400
Recommended pump flow capacity main circuit ¹⁾ (l/min.)	30 - 60	40 - 80	60 - 120	80 - 150
Recommended pump flow capacity auxiliary circuit ¹⁾ (l/min.)	-	35 - 50	40 - 60	40 - 60
Recommended operating pressure (bar)	190	250	280	280
Service weight of carrier vehicle ²⁾ (t)	attachment to crane	4,5 - 9	7 - 15	14 - 22
Optional: Cylinder swivel unit	-	• 2 x 48°	• 2 x 48°	• 2 x 48°
Optional: Tiltator	-	-	•	•
Optional: Accumulator	-	•	•	•
Optional: Quick coupler QC10	•	-	-	-

¹⁾ Depending on operating mode or equipment. ²⁾ Depending on carrier vehicle's specifications. • available - not available

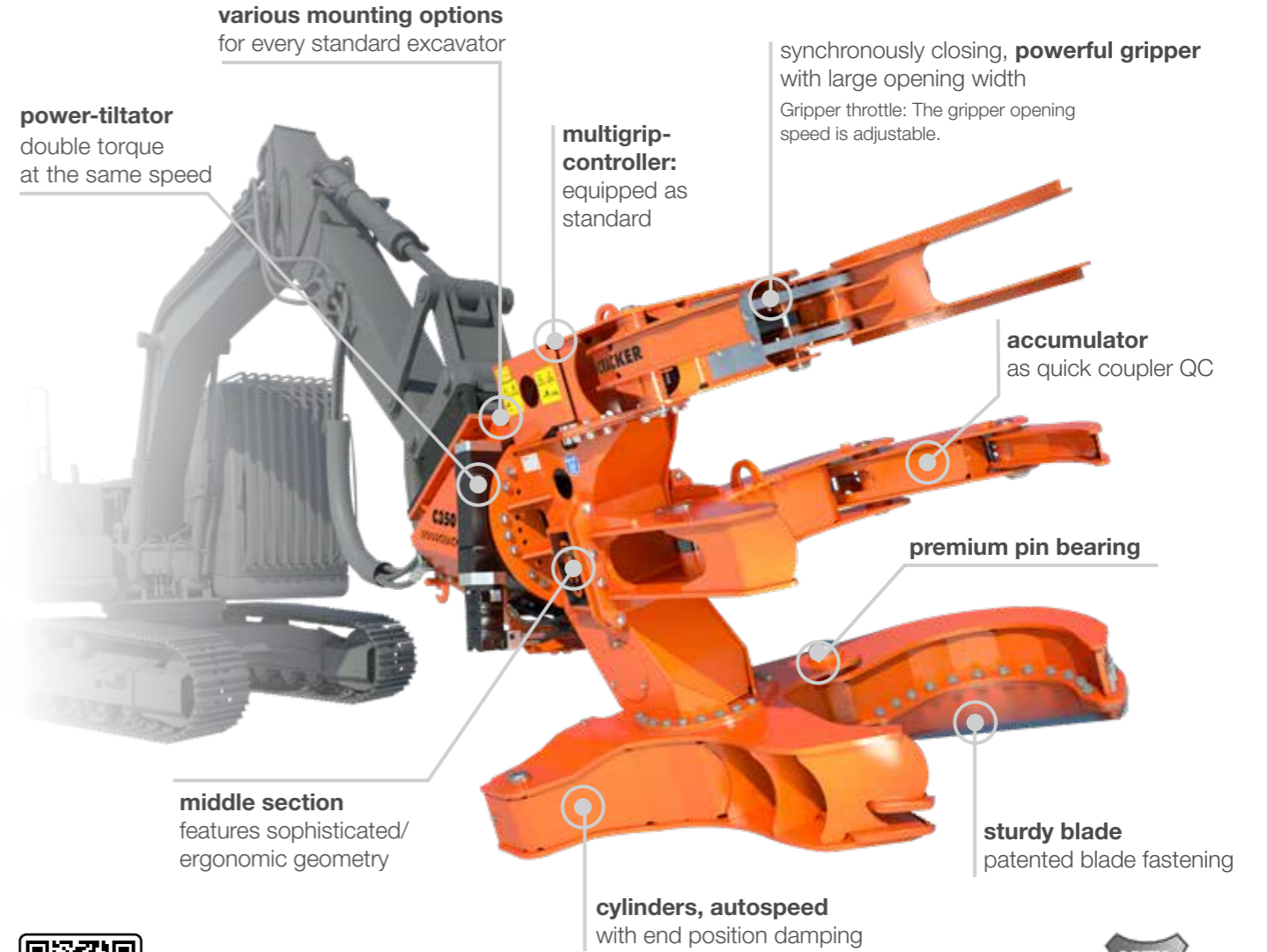
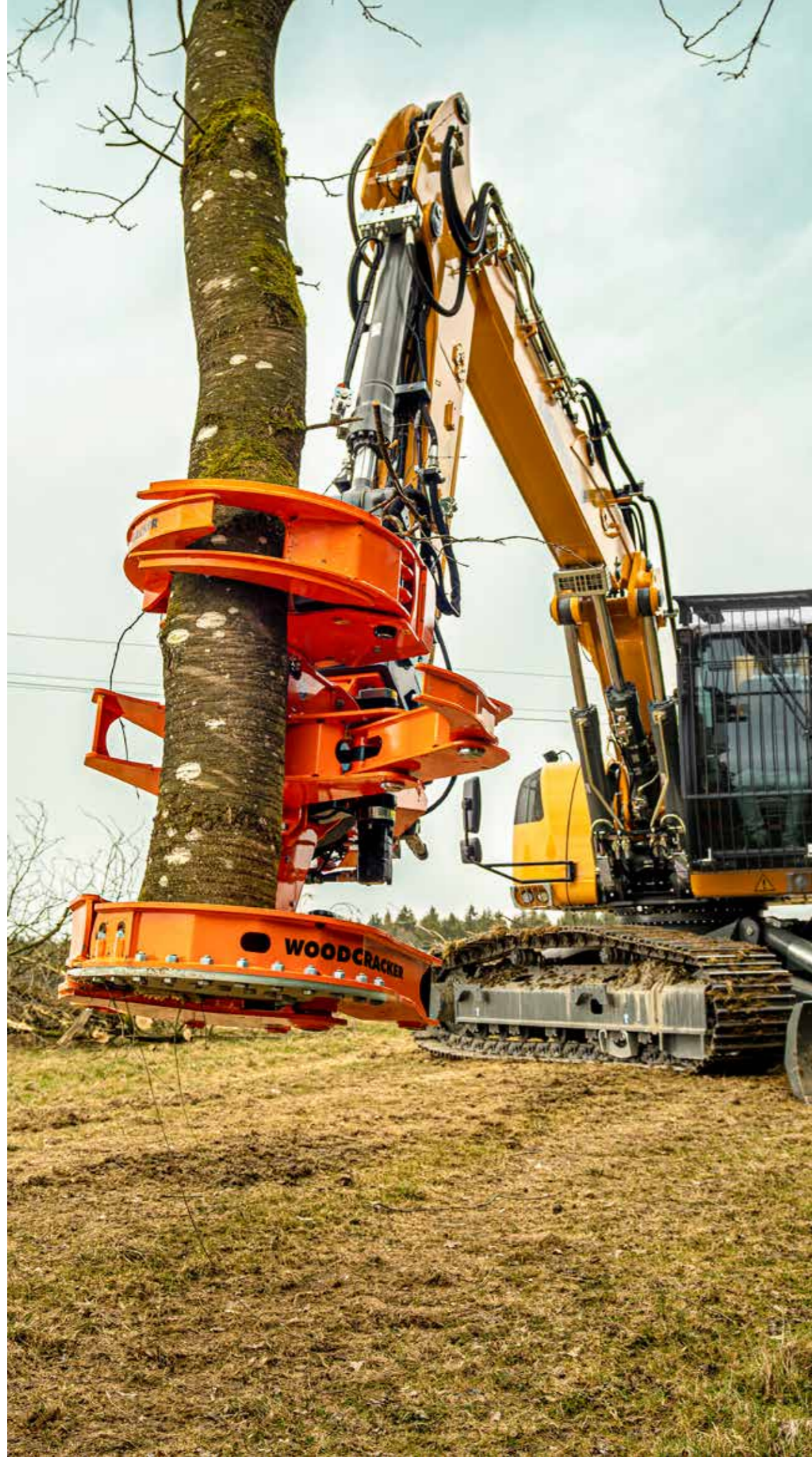
Technical data and illustrations are not binding. Subject to changes for reasons of further development.

APPLICATION AREAS

- Fast harvesting of small trees and brush.
- Felling of short-rotation plantations.
- In open terrain, on slopes, in marshy areas.
- Cultivation and landscaping.
- Maintenance work along traffic routes and thoroughfares.
- Extensive harvesting of forested areas.
- Maintenance measures in swamp areas and along riverbanks.



Autotilt-funktion at the Woodcracker® CB150 crane



KEY FACTS

- Suitable for every standard excavator, only 5 hydraulic connections needed (including all options).
- Proper and simple connection.
- Replaceable, high-strength blade, easy to sharpen, patented.
- Additional workload of the carrier vehicle due to the treeshear Woodcracker® C.
- Supporting foot for safe storage and transport.
- Robust and proven technology – Low-wear and low-service.
- KTL-primed (cathodic dip-coating) and powder coating.
- Made of high-strength Hardox® steel.

OPTIONS

- Autospeed:
allows faster closing of the cutting mechanism in weak wood.
- Accumulator (C300 - C550 as quick coupler QC):
Used to work fast in weak wood and to bunch material. Accumulator can be removed easily to reduce the machine's weight.
- Automatic lubrication system for Tiltator
- 4 different mounting options.
- Mic 4.0-capable.



THE PROFESSIONAL AMONGST THE HARVESTER HEADS.



Maintenance measures along traffic routes.



In marshlands and riverbanks.

TECHNICAL DATA



PATENTED

WOODCRACKER® C	C 250	C 300	C 350	C 450	C 550	C 650
Cutting diameter soft wood (mm)	330	350	400	500	600	700
Cutting diameter hard wood (mm)	280	300	350	450	550	650
Gripper opening (mm)	930	1430	1430	1600	1600	1720
Shear opening (mm)	450	550	700	800	900	1070
Deadweight (Base – Full equipment) ¹⁾ (kg)	580 - 970	750 - 1080	1150 - 1620	1760 - 2350	2000 - 2620	3050
Recommended pump flow capacity main circuit ¹⁾ (l/min.)	50 - 100	70 - 150	70 - 150	80 - 160	100 - 190	150 - 250
Recommended pump flow capacity auxiliary circuit ¹⁾ (l/min.)	35 - 50	45 - 60	45 - 60	45 - 60	50 - 70	50 - 70
Recommended operating pressure (bar)	280	280	280	280	280	300
Service weight of carrier vehicle ²⁾ (t)	7 - 15	12 - 18	14 - 20	20 - 25	24 - 30	28 - 40
Multigrip	integrated	integrated	integrated	integrated	integrated	integrated
Optional: Autospeed	•	•	•	•	•	-
Optional: Cylinder swivel unit	• 2 x 48°	• 2 x 48°	• 2 x 48°	• 2 x 48°	• 2 x 48°	• 2 x 48°
Optional: Tiltator	•	•	•	•	•	-
Optional: Power-Tiltator	-	-	•	•	•	•
Optional: Automatic lubrication system for Tiltator	•	•	•	•	•	•
Optional: Accumulator	•	• QC	• QC	• QC	• QC	-

Technical data and illustrations are not binding. Subject to changes for reasons of further development.

APPLICATION AREAS

- Conventional harvest of trees and bushes.
- Harvest of short rotation plantations.
- In rough terrain, hill areas and bog areas.
- Maintenance along traffic roads and routes.
- Large-scale harvest of forest areas.
- Problematic and dangerous tree felling.
- Cultivation and landscape maintenance. Bunched and organized deposition due to accumulating function.
- In places, that require to remove the tree in an upright position (to protect the surrounding area).
- Maintenance of infrastructure networks.
- Maintenance measures in flood area and along riverbanks.
- Recovery work in disaster areas.



C650 with cutting diameter up to 70 cm.



C250 on the Roto-telehandler.

¹⁾ Depending on operating mode or equipment. ²⁾ Depending on carrier vehicle's specifications. • available - not available



INDIVIDUAL MOUNTING OPTIONS.



C300 with Menzimuck walking excavator.



C350 during forest edge maintenance.

MOUNTING OPTIONS

1. Rigid mounting

- using slewing drive of excavator



2. Optional: Cylinder swivel unit

- 2 x 48° swivelling
- low-maintenance



3. Optional: Tiltator

- continuously rotating (360°)
- Advantage, for using the gripper to sort lumber



4. Optional: Power-Tiltator

- During tree removal, the Power Tiltator provides more strength by the means of double torque at the same speed.



Included Multigrip as standard feature:

- Hydraulic block inbetween gripper and cutting unit, which allows high pump capacity, and regulates the gripper's and the cutting unit's opening and closing.
- With inlet pressure relief valve: main pressure is ensured independently of the excavator.
- Safe grip: During depositing, the cutting mechanism opens first, followed by the gripper. During cutting, the gripper closes first, followed by the cutting unit.

Mounting:

- Clear-cut, easy attachment design in the mounting bracket
- Optimum attachment angle
- Protected and generously dimensioned hydraulic hoses
- Hydraulic coupling point perfectly positioned
- Only five hydraulic couplings are required for all functions, including all options
- Attachment: Plug and play

Cutting unit:

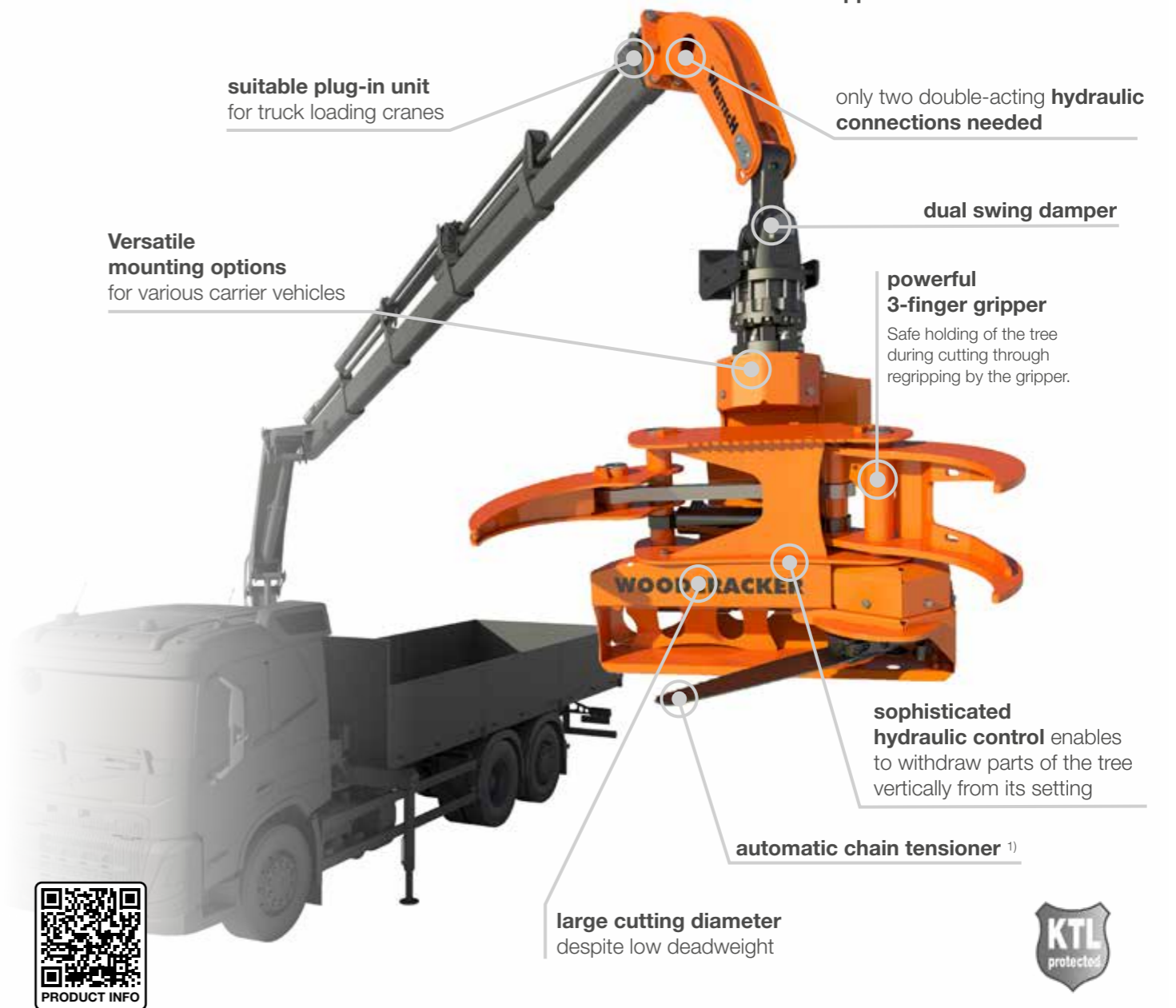
- Self-cleaning counter comb for the blade
- Replaceable, high-strength blade, easily resharpened
- Patented blade fastening
- Strong main bolt with special safety nut
- Blade fastened from the underside (except C550) - wear protection for the swing arm



Multigrip controller



optional: Accumulator (QC)



KEY FACTS

- Designed for gimbal-mounting on a crane, excavator or telescope stage Woodcracker® T.
- No self-initiated tilting.
- Manually lockable tilt function and saw, for usage as gripper.
- The machine fits on any forestry crane instead of the existing gripper.
- Manutilt – is the carrier vehicle equipped with more than one hydraulic circuits, the tilt function can be controlled independently from the gripper.
- Low-service and low-wear due to special cutting system.
- KTL-primed (cathodic dip-coating) and powder coating.
- Made of high-strength Hardox® steel.

¹⁾ Thanks to the **automatic chain tensioner**, the chain has always the right tension. Regardless of whether the machine has just started or has been operating for several hours. This means that the working process is not interrupted by a chain coming off.

OPTIONS

- Quick coupler QC10
- Autotilt – Due to sophisticated hydraulic control, it is possible to withdraw parts of the tree vertically from its setting. Therefore, the grip saw can be operated with only one double-acting hydraulic circuit.



Highly rugged and durable grapple saw.



Practical wireless control.

TECHNICAL DATA



PATENTED

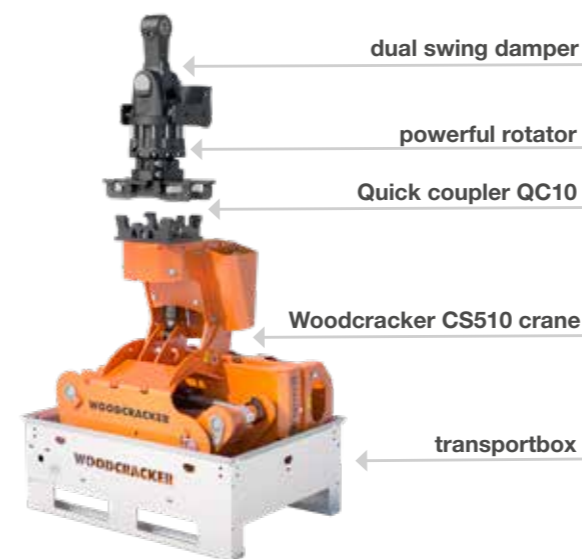
WOODCRACKER® CS crane

	CS 510 crane
Cutting diameter (mm)	540
Gripper opening (mm)	1270
Deadweight (base – full equipment) (kg)	370 - 500
Recommended pump flow capacity ¹⁾ (l/min.)	50 - 90
Recommended operating pressure ¹⁾ (bar)	200 - 280
Chain lubrication	oil
Optional: Rotator including swing damper	•
Optional: Rotator including dual swing damper	•
Optional: Quick coupler QC10	•
Optional: Autotilt (only one double-acting hydraulic connection needed)	•

¹⁾ Depending on operating mode or equipment. • available - not available

APPLICATION AREA

- Different mounting options possible.
- Suitable for every standard crane, e.g. wood/recycling or loading cranes and for excavators, timber trailers, trucks or telehandlers.
- Tree maintenance actions in urban areas.
- On a crane for special tree removal and traffic safety work.



transportbox with integrated tool's drawer



User-friendly operation.



Versatile mounting options.

Technical data and illustrations are not binding. Subject to changes for reasons of further development.



strong Tiltator
machine is endlessly rotatable
optional: Power-Tiltator with
twice as much torque

powerful gripper
for safe grip of the
harvested material



automatic chain tensioner ¹⁾

grease lubricated chain ²⁾

The **saw box** has a **swinging chassis**
with **active suspension**.
prevents the saw blade
from bending due to force acting on it.



PRODUCT INFO

KEY FACTS

- Designed to be attached to excavators.
- Various mounting options adapted to the carrier vehicle
Optional: adapter plates for common carrier vehicles.
- Plug-and-play connection.
- Particularly developed for tree fellings due to safety reasons.
- Low net weight.
- Robust and proven technology –
Low-wear and low-service.
- KTL-primed (cathodic dip-coating) and powder coating.
- Made of high-strength Hardox® steel.



¹⁾ Thanks to the **automatic chain tensioner**,
the chain has always the right tension.

Regardless of whether the machine has just started or has
been operating for several hours. This means that the working
process is not interrupted by a chain coming off.

²⁾ As the work area is not just at ground height,
but at higher levels, **grease is used for chain
lubrication**.

Compared to oil lubrication, this avoids oil misting, which would
cause contamination of the driver's cab, and especially the
windscreen. The grease stays on the chain far longer and is
therefore also more economically and longer lasting.

OPTIONS

- 3 different mounting options.
- Mic 4.0-capable.
- Automatic lubrication system for Tiltator.



THE COMPACT GRAPPLE SAW FOR ATTACHMENT TO EXCAVATORS.



Grease lubricated chain.



Rapid chopping and piling.

TECHNICAL DATA



PATENTED

WOODCRACKER® CS compact	CS 545 compact	CS 610 compact
Cutting diameter (mm)	540	610
Gripper opening (mm)	1270	1280
Deadweight (Base – Full equipment) (kg)	610 - 780	830 - 1060
Recommended pump flow capacity main circuit ¹⁾ (l/min.)	50 - 100	65 - 110
Recommended pump flow capacity auxiliary circuit ¹⁾ (l/min.)	35 - 50	40 - 60
Recommended operating pressure ¹⁾ (bar)	200 - 280	230 - 280
Service weight of carrier vehicle ²⁾ (t)	8 - 15	15 - 20
Saw unit	suspended	actively suspended
Chain lubrication of saw	grease	grease
Optional: Tiltator	•	•
Optional: Power-Tiltator	-	•
Optional: Automatic lubrication system for Tiltator	•	•

¹⁾ Depending on operating mode or equipment. ²⁾ Depending on carrier vehicle's specifications. • available - not available

Technical data and illustrations are not binding. Subject to changes for reasons of further development.

APPLICATION AREAS

- Safe removal of trees in several parts.
- Harvest of tree trunks.
- In rough terrain, hill areas and swamplands.
- Maintenance work along traffic roads and routes.
- Felling of dangerous trees.
- Quick processing of the already logged tree lying on the ground.



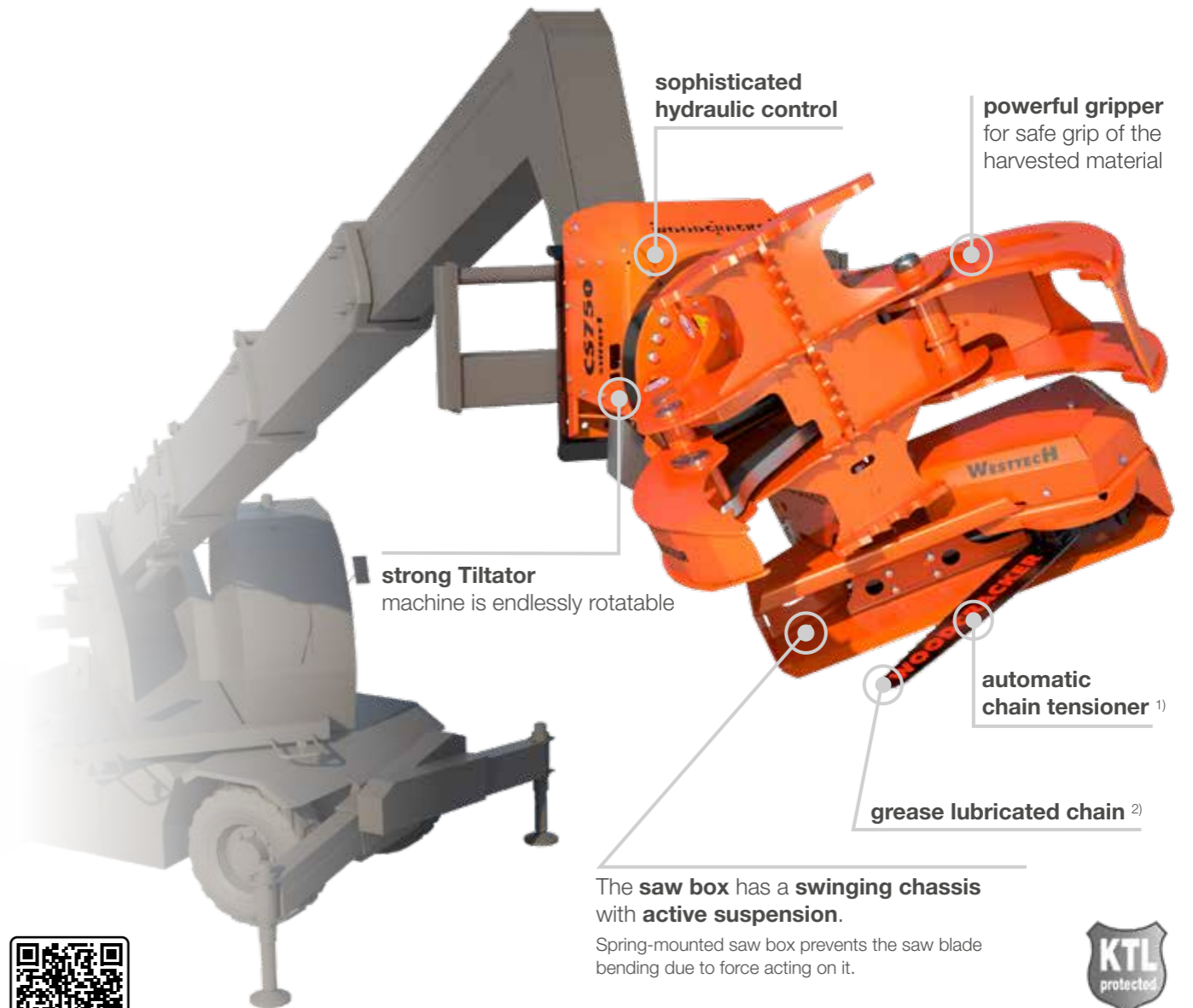
saw unit has a swinging chassis with active suspension



Sophisticated, strong gripper.



Maintenance work along traffic roads.



The **saw box** has a **swinging chassis** with **active suspension**.
Spring-mounted saw box prevents the saw blade bending due to force acting on it.



KEY FACTS

- Various mounting options adapted to the carrier vehicle.
Optional: adapter plates for common carrier vehicles.
- Particularly developed for tree fellings due to safety reasons.
Designed to be attached to telescopic handlers.
- Plug-and-play connection.
- Only one double-acting hydraulic valve needed.
- Low net weight.
- Robust and proven technology –
Low-wear and low-service.
- KTL-primed (cathodic dip-coating) and powder coating.
- Made of high-strength Hardox® steel.

¹⁾ Thanks to the **automatic chain tensioner**, the chain has always the right tension.
Regardless of whether the machine has just started or has been operating for several hours. This means that the working process is not interrupted by a chain coming off.

²⁾ As the work area is not just at ground height, but at higher levels, **grease is used for chain lubrication**.
Compared to oil lubrication, this avoids oil misting, which would cause contamination of the driver's cab, and especially the windscreen. The grease stays on the chain far longer and is therefore also more economically and longer lasting.

OPTIONS

- 3 different mounting options.
- Automatic lubrication system for Tiltator.



THE SMART GRAPPLE SAW FOR ATTACHMENT TO TELESCOPIC HANDLERS.



Designed for safety tree fellings.



Safe handling with high operating range.

TECHNICAL DATA



PATENTED Released and certified by MAGNI, DIECI and MANITOU.

WOODCRACKER® CS smart	CS 615 smart	CS 750 smart
Cutting diameter (mm)	610	750
Gripper opening (mm)	1270	1280
Tiltator	endlessly rotatable	endlessly rotatable
Deadweight (Base - Full Equipment) (kg)	670	900
Recommended pump flow capacity ¹⁾ (l/min.)	50 - 90	65 - 110
Recommended operating pressure ¹⁾ (bar)	200 - 280	230 - 280
Service weight of carrier vehicle ²⁾ (t)	10 - 20	15 - 25
Saw unit	suspended	actively suspended
Chain lubrication of saw	grease	grease
Optional: Automatic lubrication system for Tiltator	•	•

¹⁾ Depending on operating mode or equipment. ²⁾ Depending on carrier vehicle's specifications. • available - not available

APPLICATION AREAS

- Safe removal of trees in several parts.
- Problematic tree fellings in urban and residential areas.
- Maintenance work along traffic roads and routes.
- Felling of dangerous trees.
- Tree felling in confined or hard-to-reach areas.
- Precise tree felling and tree care near infrastructure networks.



saw unit has a swinging chassis with active suspension



Automatic chain tensioner.

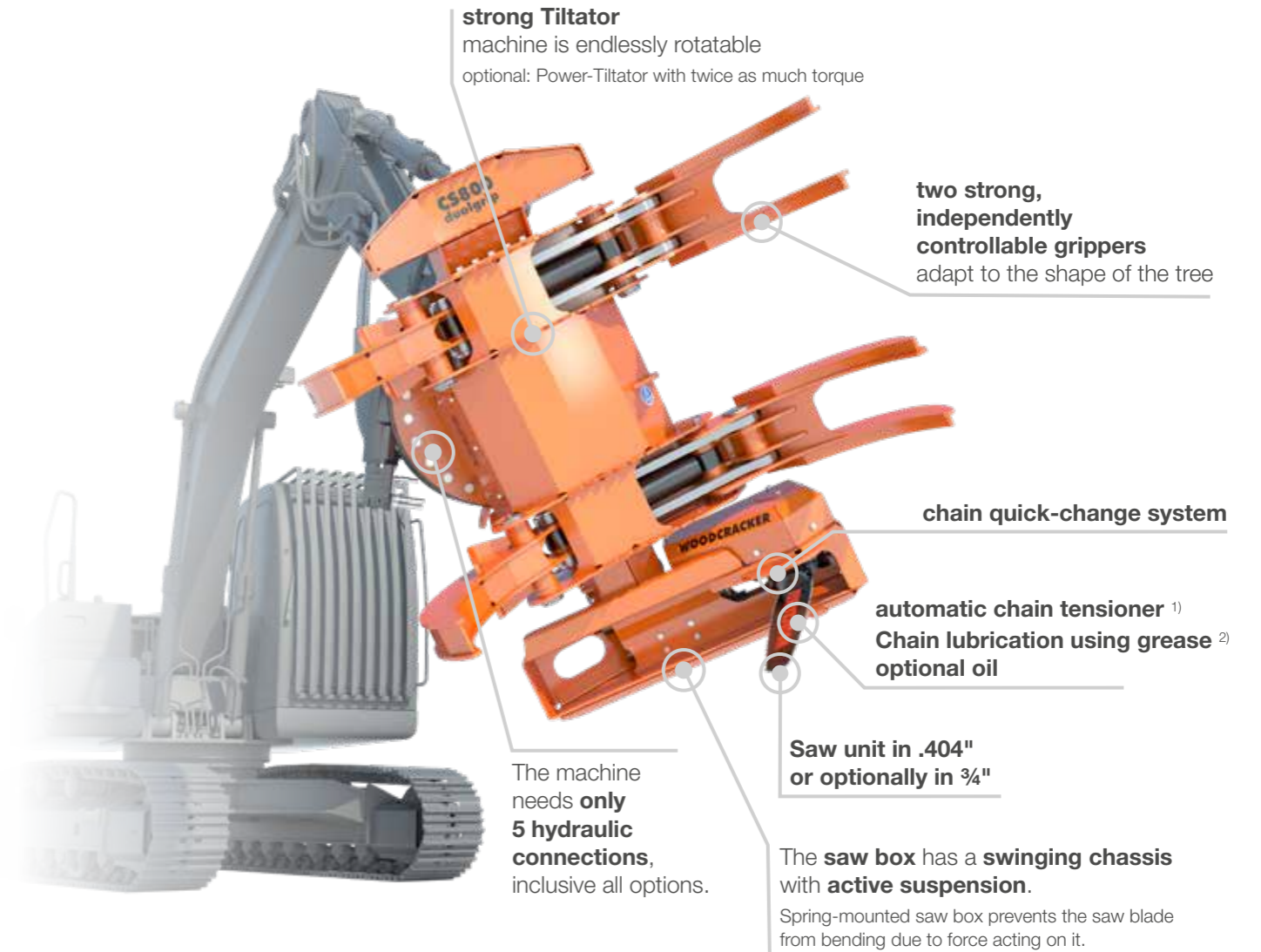


Problematic tree fellings in urban and residential areas.

Technical data and illustrations are not binding. Subject to changes for reasons of further development.



SAWING – Grapple saw for safety tree feeling



strong Tiltator
machine is endlessly rotatable
optional: Power-Tiltator with twice as much torque

two strong, independently controllable grippers
adapt to the shape of the tree

chain quick-change system

automatic chain tensioner ¹⁾
Chain lubrication using grease ²⁾
optional oil

Saw unit in .404"
or optionally in 3/4"

The machine needs **only 5 hydraulic connections**, inclusive all options.

The **saw box** has a **swinging chassis** with **active suspension**.

Spring-mounted saw box prevents the saw blade from bending due to force acting on it.



PRODUCT INFO



KEY FACTS

- Suitable for every standard excavator.
- The rigid mounting of the Woodcracker® CS dualGrip to the excavator makes it possible to withdraw parts of the tree vertically from its setting. In this way, trees or objects nearby are not damaged.
- Grease lubrication does not cause oil fogging and lubricates the chain in any position.
- Removable guide bracket.
- Ideal transport position for a safe transport.
- Robust and long-lasting, low-wear and low-service.
- KTL-primed (cathodic dip-coating) and powder coating.
- Made of high-strength Hardox® steel.

¹⁾ Thanks to the **automatic chain tensioner**, the chain has always the right tension.

Regardless of whether the machine has just started or has been operating for several hours. This means that the working process is not interrupted by a chain coming off.

²⁾ As the work area is not just at ground height, but at higher levels, **grease is used for chain lubrication**.

Compared to oil lubrication, this avoids oil misting, which would cause contamination of the driver's cab, and especially the windscreen. The grease stays on the chain far longer and is therefore also more economically and longer lasting.

OPTIONS

- Automatic lubrication system for Tiltator
- Mic 4.0-capable.



THE STRONG GRAPPLE SAW WITH TWO INDEPENDENT GRIPPERS.



The strong grippers hold the tree firmly.



Two strong independent grippers.

TECHNICAL DATA



PATENTED

WOODCRACKER® CS dualGrip	CS 600 dualGrip	CS 800 dualGrip
Cutting diameter (mm)	600	800
Gripper opening (mm)	1430	1600
Tiltator	endlessly rotatable	endlessly rotatable
Weight (base – fully equipped) ¹⁾ (kg)	1090 - 1300	1620 - 1670
Recommended pump flow capacity ¹⁾ (l/min.)	120 - 170	120 - 170
Recommended pump flow capacity for optional functions ¹⁾ (l/min.)	50 - 70	50 - 70
Recommended operating pressure (bar)	280	280
Service weight of carrier vehicle ²⁾ (t)	14 - 22	20 - 28
Saw unit	actively suspended	actively suspended
Chain lubrication of saw	grease/oil	grease/oil
Optional: Power Tiltator	•	•
Optional: Automatic lubrication system for Tiltator	•	•
Optional: with 3/4 Zoll saw chain	-	•

Technical data and illustrations are not binding. Subject to changes for reasons of further development.

APPLICATION AREAS

- Safe removal of trees in segments, in every position or angle.
- Harvest of tree trunks.
- In rough terrain, hill areas and swamplands.
- Maintenance work along traffic roads and routes.
- Tree felling due to safety reasons.
- Quick processing of the already logged tree lying on the ground.
- Maintenance of the structure gauge.

Saw chain .404"



Saw chain 3/4"



Maintenance work along traffic roads and routes.



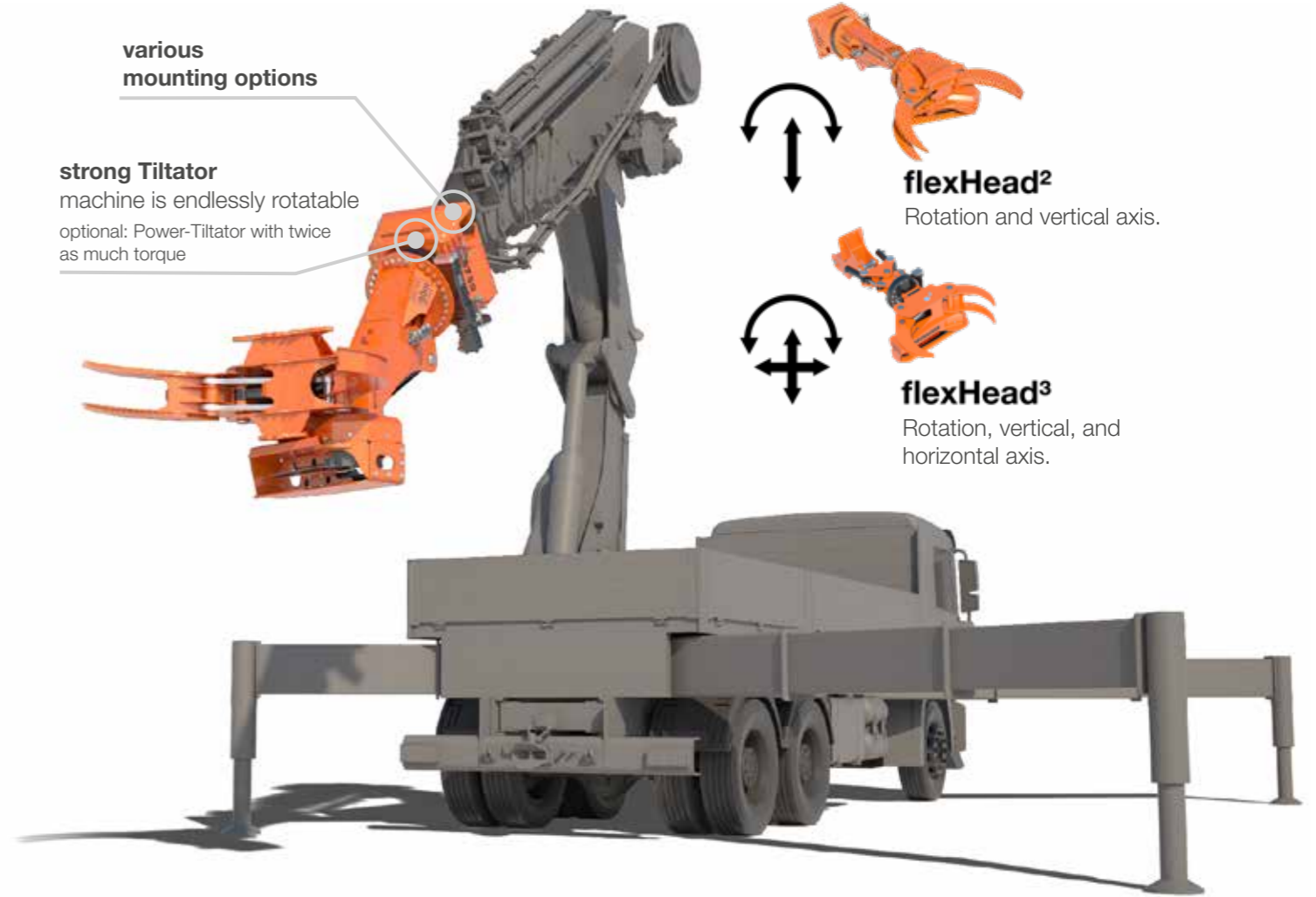
Harvest of tree trunks.

¹⁾ Depending on operating mode or equipment. ²⁾ Depending on carrier vehicle's specifications. • available - not available



various mounting options

strong Tiltator
machine is endlessly rotatable
optional: Power-Tiltator with twice as much torque



KEY FACTS

- Various mounting options possible.
- High mobility and flexible control.
- Quick-change system enables attachments to be quickly exchanged with each other.
- Various attachments possible - Working basket, photovoltaic cleaning brushes, etc.
- Safe working method for operators.
- Quick set-up at the respective construction site.
- Targeted tree care in challenging conditions.



Woodcracker® CS750 flexHead² for tree care.



INNOVATIVE ATTACHMENT FOR TRUCK CRANES.



Quick set-up at the construction site.



Working safely with high reach.



Working possible without blocking both lanes.



Woodcracker® CS590 flexHead³.

TECHNICAL DATA

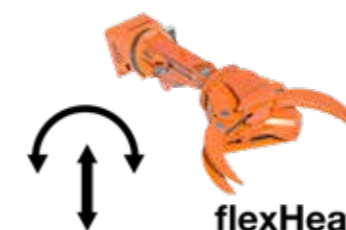


WOODCRACKER® CS flexHead	CS 590 flexHead ³	CS 750 flexHead ²
Cutting diameter (mm)	600	750
Gripper opening (mm)	1270	1600
Tiltator	endlessly rotatable	endlessly rotatable
Deadweight (Base - Full equipment) (kg)	760 - 780	1100 - 1250
Recommended pump flow capacity ¹⁾ (l/min.)	50 - 90	65 - 110
Recommended operating pressure ¹⁾ (bar)	230 - 300	230 - 280
Carrier vehicle, for cranes from (mto)	35	58
Saw unit	rigid	active suspended
Chain lubrication saw	oil	oil/grease
Angle of motion vertically (degree)	170	175
Angle of motion horizontally (degree)	90	-
Optional: Power-Tiltator	-	•
Optional: Automatic lubrication system for Tiltator	-	•
Optional: Quick coupler	•	-

¹⁾ Depending on operating mode or equipment. ²⁾ Depending on specifications of the operation vehicle. • available - not available

APPLICATION AREAS

- Safe removal of trees in several parts, vertically.
- Problematic tree fellings in urban and residential areas.
- Maintenance of the structure gauge.
- Maintenance of infrastructure networks.



flexHead²
Rotation and vertical axis.



flexHead³
Rotation, vertical, and horizontal axis.

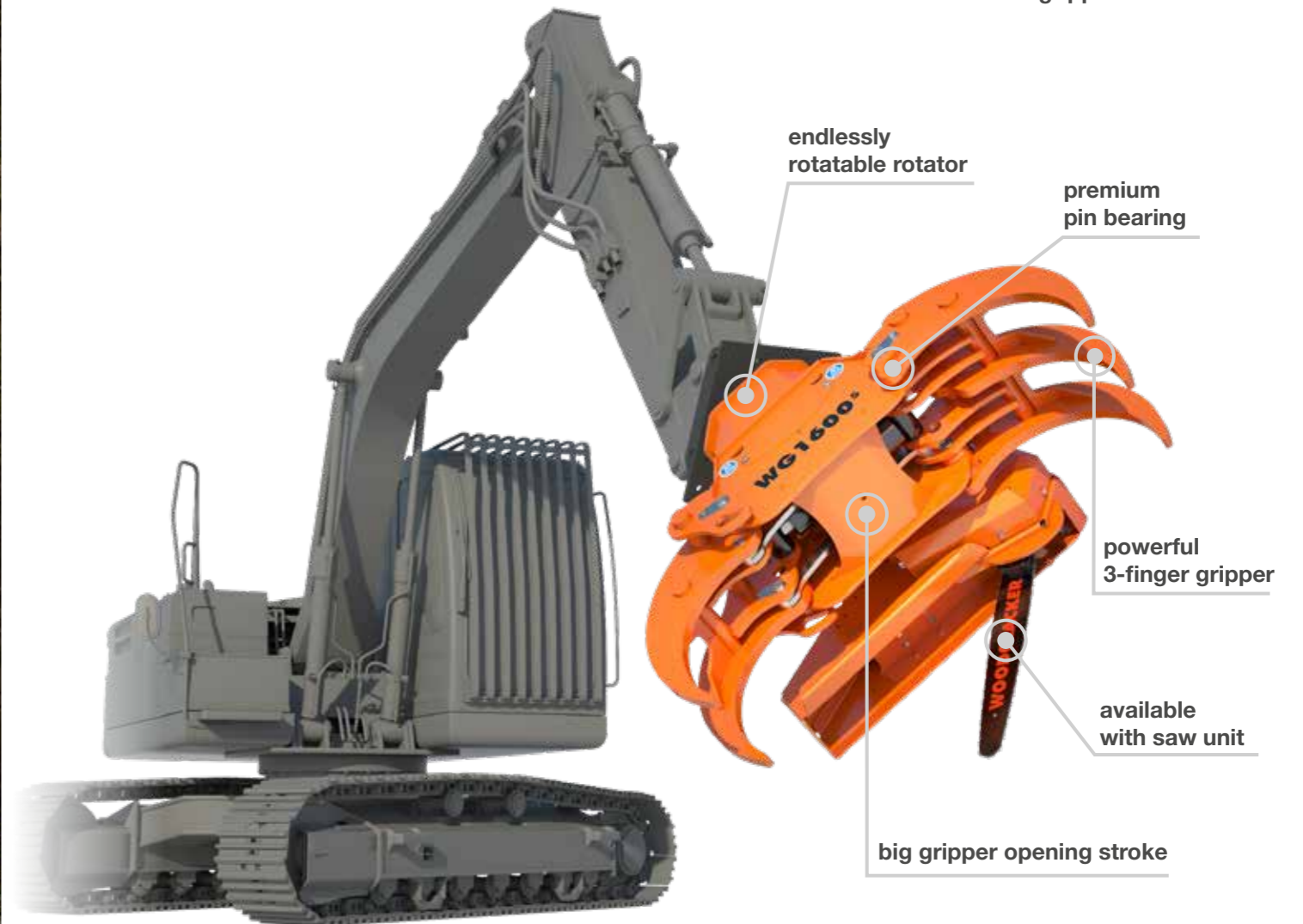
Technical data and illustrations are not binding. Subject to changes for reasons of further development.

WOODGRIPPER WG



WOODGRIPPER WG

SAWING – Woodgripper with saw unit



PRODUCT INFO

KEY FACTS

- Rigid or cardanic mounting possible.
- Can be mounted to cranes, timber trailers or excavators.
- Modular system with different options, eg. saw unit
- Robust and proven technology – Low-wear and low-service.
- KTL-primed (cathodic dip-coating) and powder coating.
- Made of high-strength Hardox® steel.



OPTIONS

- Quick coupler QC10
- Rotator gimbal/rigid
- Saw unit



7-finger-gripper with saw unit



THE ROBUST WOOD GRIPPER WITH SAW UNIT.



VIDEO



Gripper opening stroke 1270mm.



For rigid or cardanic mounting.

TECHNICAL DATA

5-finger gripper and 7-finger gripper available



WOODGRIPPER	WG 1270	WG 1600	WG 1720
Gripper opening stroke (mm)	1270	1600	1720
Deadweight (Base – Full equipment) (kg)	180 - 500	530 - 780	690 - 930
Recommended pump flow capacity ¹⁾ (l/min.)	30 - 90	60 - 190	60 - 190
Recommended operating pressure ¹⁾ (bar)	180 - 300	100 - 300	100 - 300
Service weight of carrier vehicle rigid ²⁾ (t)	3 - 10	12 - 22	15 - 28
Service weight of carrier vehicle cardanic ²⁾ (t)	3 - 15	12 - 22	15 - 60
Number of gripper fingers	3	5 opt. 7	3
Optional: Quick coupler QC10	•	-	-
Optional: Rotator (gimbal or rigid)	gimbal/rigid	gimbal/rigid	gimbal/rigid
Optional: Saw unit	•	•	-
Optional: Walking foot with cardanic attachment	•	•	-

¹⁾ Depending on operating mode or equipment. ²⁾ Depending on specifications of the operation vehicle. • available - not available

Technical data and illustrations are not binding. Subject to changes for reasons of further development.

EINSATZGEBIETE

- Collecting/Loading/Manipulating.
- For tree trunks, branches or brushwood.
- Processing of already felled trees.
- Processing of windthrown timber.
- Loading of logs.
- Gripping and sawing pieces of wood.
- Transport preparation, wood is cut into suitable lengths.



powerful finger-gripper for gimbal mounting



Sturdy and low-wear woodgripper with saw unit.



Can be mounted to cranes, timer trailers or excavators.



**STEPPING FOOT FOR EXCAVATORS,
DESIGNED FOR WALKING ON SLOPES.**

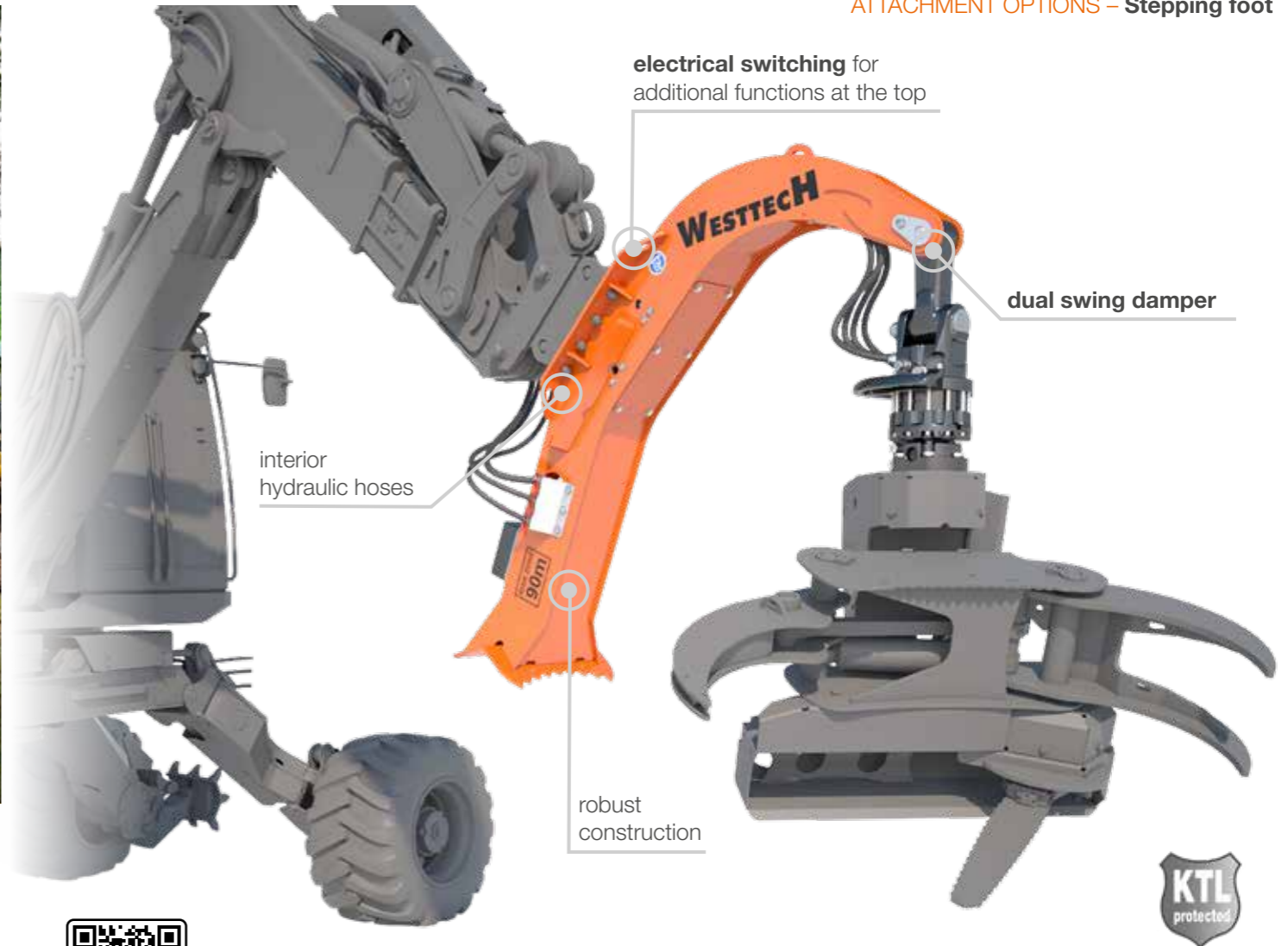
TECHNICAL DATA



WOODCRACKER® SF	SF 6	SF 12
Extension of working range (mm)	1150	1150
Hydraulic hoses	inside	inside
Deadweight (Base – Full equipment) (kg)	150 - 250	230 - 330
Recommended litre capacity main circuit ¹⁾ (l/min.)	50 - 90	50 - 90
Recommended litre capacity auxiliary circuit ¹⁾ (l/min.)	30 - 40	30 - 40
Recommended operating pressure main circuit ¹⁾ (bar)	200 - 280	200 - 280
Recommended operating pressure auxiliary circuit ¹⁾ (bar)	200 - 230	200 - 230
Service weight of carrier vehicle ²⁾ (t)	6 - 14	12 - 22
Optional: Electrical switching for additional functions at the top	•	•
Optional: Rotator including dual swing damper	•	•
Optional: Quick coupler QC10	•	•
Optional: Woodgripper 1270	•	•
Optional: Woodcracker® CS510 crane	•	•

¹⁾ Depending on operating mode or equipment. ²⁾ Depending on carrier vehicle's specifications. • available - not available

Technical data and illustrations are not binding. Subject to changes for reasons of further development.



KEY FACTS

- Perfect suited for Woodcracker® CS crane and Woodgripper.
- Various individual attachments possible (eg. wood gripper, grip saws, clamshell bucket, ...).
- Can be attached to standard excavator quick-coupling systems.
- No special excavator specification needed - for every excavator from 14 - 22t.
- KTL-primed (cathodic dip-coating) and powder coating.
- Made of high-strength Hardox® steel.

APPLICATION AREAS

- Suitable for all standard excavators.
- For movement in rough terrain.
- For thinning hillside.
- Adapter for cardanic attachments.





THE TELESCOPIC STAGE TO EXTEND THE REACH WITHOUT MODIFICATION.

TECHNICAL DATA



WOODCRACKER® T	T 4000
Work range (mm)	bis 6350
Telescope stroke (mm)	4000
Telescope version	doppelt
Telescope hose guide	innenliegend
Deadweight (Base – Full equipment) (kg)	680 - 730
Stroke torque ex excavator kinematics ¹⁾ (kNm)	92
Admitted ultimate load (retracted/extended) ¹⁾ (kg)	2500/1550
Maximum compression force (kg)	100
Recommended litre capacity to telescope extension ²⁾ (l/min.)	50 - 110
Recommended litre capacity to auxiliary circuit ²⁾ (l/min.)	30 - 40
Recommended operating pressure for telescope extension (bar)	250
Service weight of carrier vehicle ³⁾ (t)	14 - 22
Optional: hose reel	•
Optional: Rotator including dual swing damper	•
Optional: Quick coupler QC10	•
Optional: Woodgripper 1270	•
Optional: Woodcracker® CS510 crane	•

¹⁾ Gross figures without attachment. Depending on carrier vehicle weight. ²⁾ Depending on operating mode or equipment. ³⁾ Depending on specifications of the operation vehicle. • available - not available

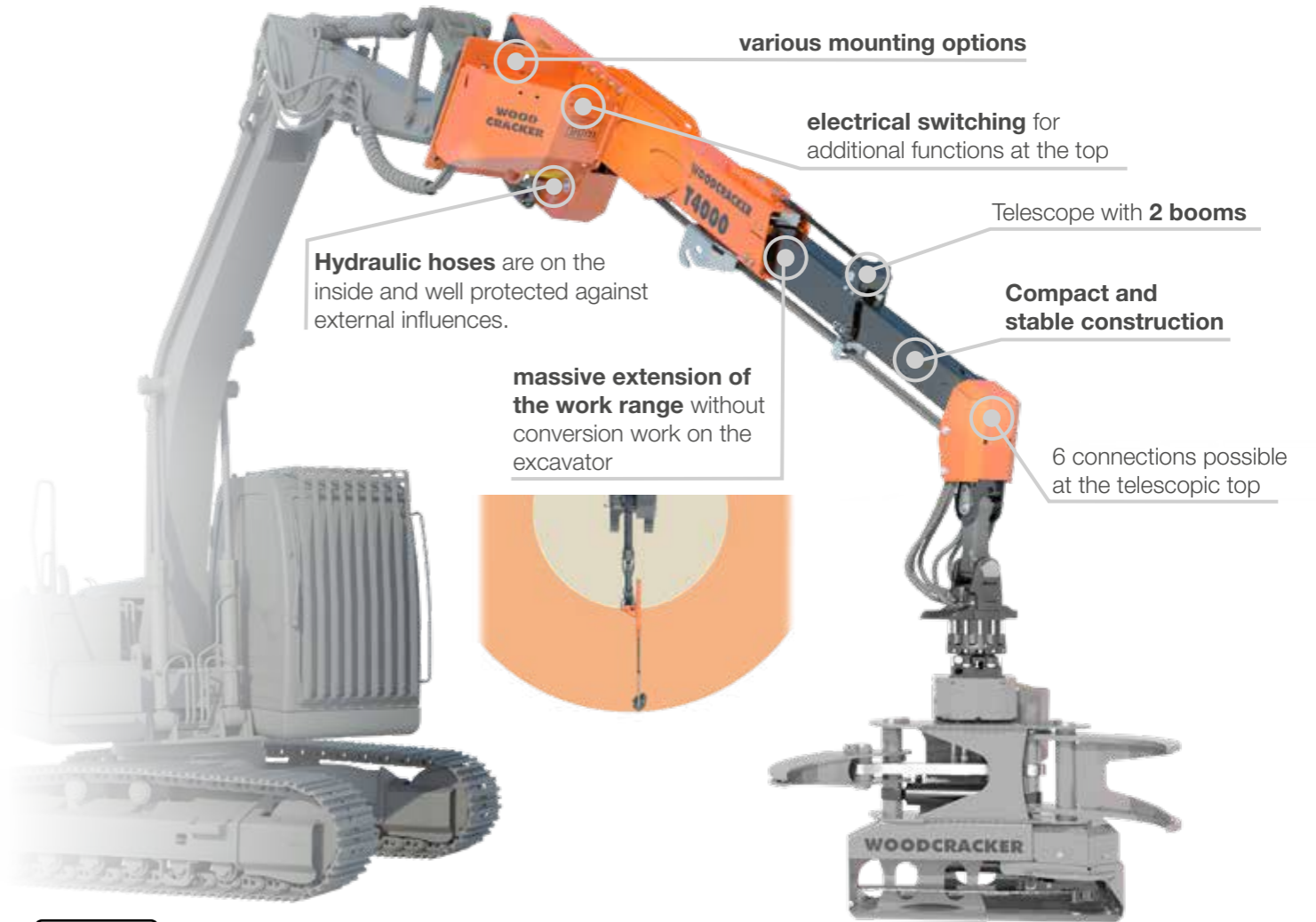
Technical data and illustrations are not binding. Subject to changes for reasons of further development.



KEY FACTS

- Perfect suited for Woodcracker® CS crane and Woodgripper.
- Various individual attachments possible (eg. wood tongs, grapple saws, clamshell bucket, ...).
- Can be attached to standard excavator quick-coupling systems.
- 4, optional 6 hydraulic connections at the top.
- No special excavator specification needed - for every excavator from 14 - 22t.

ATTACHMENT OPTIONS- Telescope stage for excavator attachment



APPLICATION AREAS

- Can be attached to any standard excavator to increase the reach without any conversion work on the carrier vehicle.





THE ADAPTER FOR TELESCOPIC HANDLER.

TECHNICAL DATA



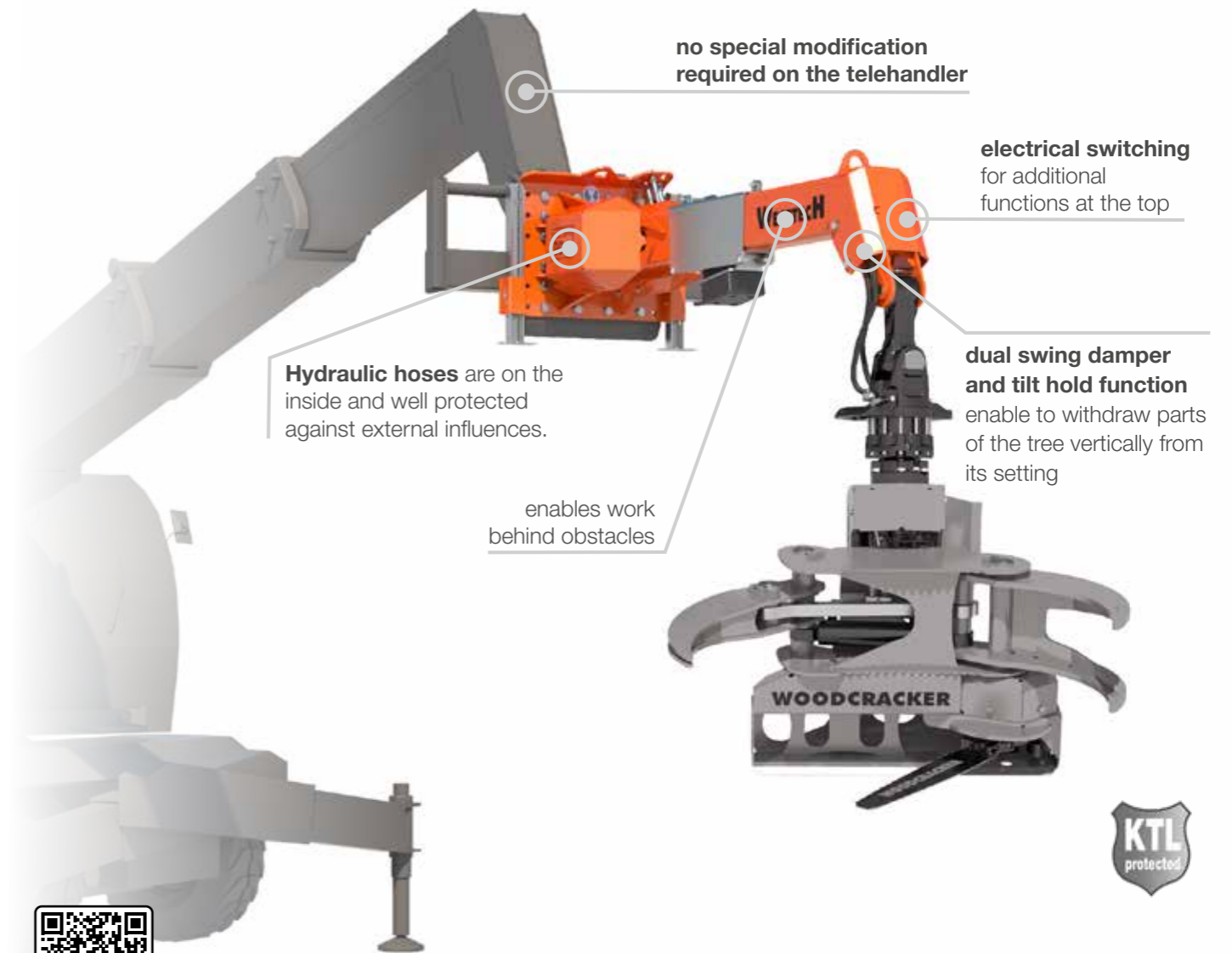
WOODCRACKER® TA	TA 2300
Work range (mm)	up to 2160
Telescope version	inside
Deadweight (kg)	260
Admitted ultimate load ¹⁾ (kg)	2000
Recommended litre capacity ²⁾ (l/min.)	50 - 90
Recommended operating pressure (bar)	200 - 280
Service weight of carrier vehicle ³⁾ (t)	15 - 25
Optional: Rotator including dual swing damper	•
Optional: Quick coupler QC10	•
Optional: Woodgripper 1270	•
Optional: Woodcracker® CS510 crane	•

¹⁾ Gross figures without attachment. Depending on carrier vehicle weight. ²⁾ Depending on operating mode or equipment. ³⁾ Depending on specifications of the operation vehicle. • available - not available

Technical data and illustrations are not binding. Subject to changes for reasons of further development.



ATTACHMENT OPTIONS – Adapter for telescopic handler attachment



KEY FACTS

- Suitable for all standard telehandlers, no special modifications to the telehandler required.
- Electrical switching enables two double-acting and one single control circuit at the top of the boom.
- Due to the dual swing damper and the tilt hold function sections of the tree can be removed upright in combination with the CS510 crane.
- Perfect suited for Woodcracker® CS crane, Woodgripper, CB crane and the W-series.
- Due to the quick coupler, various attachments such as shell grapples, splitting tongs, wood grapples, etc. can be used.

APPLICATION AREAS

- Reach increased and more outreach due to low dead weight - ideal for tree care and applications with high reach requirements.





TELEKINEMATICS FOR THE EXCAVATOR.

TECHNICAL DATA



WOODCRACKER® TK	TK15	TK30
Inclination (degree)	146	156
Deadweight (depending on attachment) ¹⁾ (kg)	275	435
Recommended pump flow capacity ¹⁾ (l/min)	40 - 60	40 - 60
Recommended operating pressure (bar)	280	280
Service weight of carrier vehicle ²⁾ (t)	up to 20	up to 28

¹⁾ Depending on operating mode or equipment. ²⁾ Depending on specifications of the operation vehicle. • available - not available

Technical data and illustrations are not binding. Subject to changes for reasons of further development.



KEY FACTS

- Flexible mounting options to common machines.
- Enables mounting of attachments to carrier vehicles with boom without tilt mechanism.
- Robust and long-lasting, low-wear and low-service.
- KTL-primed (cathodic dip painting) and powder top coat.
- Made of high-strength Hardox® steel.
- Optional: Full hydraulic quick coupler.



APPLICATION AREAS

- Connection adapter for harvester, telescopic handlers and rehandling excavators.
- For Woodcracker® machines, eg. C/CL/CB/W and Mulcher.
- For all other rigid-mounted excavator attachments, eg. excavator shovels, forest mulchers, etc.





flat design
for near-ground working

low force requirement
even for the thickest logs

premium pin bearing

various attachment options
mainly in semi-stationary version
on the timber trailer, wood crane or chipper.



PRODUCT INFO

KEY FACTS

- Available in different sizes suitable for the carrier vehicle.
- Plug-and-play connection.
- Optimal cost/benefit ratio.
- Premium pin bearing.
- Robust and proven technology – Low-wear and low-service.
- KTL-primed (cathodic dip-coating) and powder coating.
- Made of high-strength Hardox® steel.



Thanks to the possible attachment to excavators,
the log can be split and loaded in one single operation.



Various mounting options.



Semistationary on the timber trailer.



Splitting wood with the L1200 in the USA.

TECHNICAL DATA



PATENTED

WOODCRACKER® L	L 540	L 700	L 920	L 1200
Tongs opening (mm)	540	700	900	1200
Splitting force (depending on operating pressure) (t)	up to 14	up to 22	upt to 22	up to 33
Deadweight (Base – Full equipment) (kg)	195	285	370	1100
Recommended pump flow capacity ¹⁾ (l/min.)	approx. 25 - 60	approx. 25 - 60	approx. 25 - 60	approx. 80 - 150
Recommended operating pressure ¹⁾ (bar)	180 - 240	180 - 240	180 - 240	220 - 270
Optional: Standing fixture	•	•	•	•
Optional: Excavator attachment	•	•	•	-
Optional: Farm loader attachment	•	•	-	-

¹⁾ Depending on operating mode or equipment. ²⁾ Depending on specifications of the operation vehicle. • available - not available

Technical data and illustrations are not binding. Subject to changes for reasons of further development.

THE COMPACT WOOD SPLITTER

APPLICATION AREAS

- Pre-splitting wood allows a natural drying process and therefore increases biomass quality and energy yield.
- Can be used in all harvesting and processing methods of strong wood.
- Splitting thick wood trunks for further processing of split logs or chipped wood material.
- Easy supply of the pre-split material to chippers.
- Wood splitter can be used as a gripper.



Multitool timber trailer Cutting - sawing - loading - splitting!

- 1 WG 1270
- 2 CS 510 crane
- 3 CB 150 crane
- 4 L 700
- 5 W 820



endlessly rotatable Rotator
optional: 2 drive motors
for W1350 & W1800

autospeed enables
improved splitting
performance
W600 - W1000

**premium
pin bearing**

The **opening stroke** only determines the
largest end piece and is not decisive for the
maximum diameter that can be split.

high-strength blade
made from Hardox® steel



KEY FACTS

- Available in different sizes suitable for the carrier vehicle.
- Proper and simple connection.
- Plug-and-play connection.
- Easy supply of the pre-split material to chippers.
- Robust and proven technology – Low-wear and low-service.
- KTL-primed (cathodic dip-coating) and powder coating.
- Made of high-strength Hardox® steel.



endlessly rotatable Rotator for flexible application



THE STRONG WOOD SPLITTING TONGS.



Pre-splitting wood allows a natural drying process.



Gimbal-mounted on the PM-Trac.

TECHNICAL DATA



PATENTED

WOODCRACKER® W	W 600	W 820	W 1000	W 1350	W 1800
Tongs opening (mm)	620	820	1040	1370	1830
Splitting force at 240 bar (t)	26	26	26	34	47 ³⁾
Deadweight (Base – Full equipment) (kg)	310	370	580	990	1990
Recommended pump flow capacity (l/min.)	25 - 60	25 - 60	40 - 80	80 - 150	100 - 190
Recommended operating pressure (bar)	190 - 250	190 - 250	190 - 250	220 - 270	240 - 300
Service weight of carrier vehicle (t)	3,5 - 8	5 - 12	10 - 18	15 - 25	25 - 35
Roller system	•	•	-	-	-
Optional: Autospeed	•	•	•	-	-
Optional: Rotator	•	•	•	•	•

Technical data and illustrations are not binding. Subject to changes for reasons of further development.

APPLICATION AREAS

- Splitting thick wood trunks with minimal effort.
- Can be used in all harvesting and processing methods of strong wood.
- Pre-splitting wood allows a natural drying process and as a result an increase in biomass quality and energy yield.
- Splitting tongs can be used as a gripper.
- Pre-splitting wood for further processing of split logs or chipped wood material.
- Easy supply of the pre-split material to chippers.



LH 944 material handler in operation with the W1800.



Various mounting options.

¹⁾ Depending on operating mode or equipment. ²⁾ Depending on specifications of the operation vehicle. ³⁾ At 300 bar working pressure.
 • available - not available

WOODCRACKER® S



WOODCRACKER® S

CLEARING – Root stock device



KEY FACTS

- Available in different sizes suitable for the carrier vehicle.
- Easy attachment.
- Cutting and moving the rootstock is possible in one work step.
- Robust and proven technology – Low-wear and low-service.
- KTL-primed (cathodic dip-coating) and powder coating.
- Made of high-strength Hardox® steel.



Woodcracker® S200 working.



Cutting and moving at once.



Additional biomass mobilisation.

TECHNICAL DATA



WOODCRACKER® S	S200	S400
Tongs opening (mm)	410	600
Cutting width (mm)	240	480
Deadweight (kg)	170	760
Recommended pump flow capacity ¹⁾ (l/min.)	approx. 25 - 60	approx. 60 - 120
Recommended operating pressure ¹⁾ (bar)	180 - 240	240 - 270
Service weight of carrier vehicle ²⁾ (t)	1,5 - 6	max. 18

¹⁾ Depending on operating mode or equipment. ²⁾ Depending on specifications of the operation vehicle. • available - not available

APPLICATION AREAS

- Clean cutting of root stock flush to the ground.
- Further processing and chipping of the root stock.
- Additional biomass mobilisation through the harvest of residual trunk wood.
- Developed for sandy and erosion-prone soils, as the root material remains in the soil.

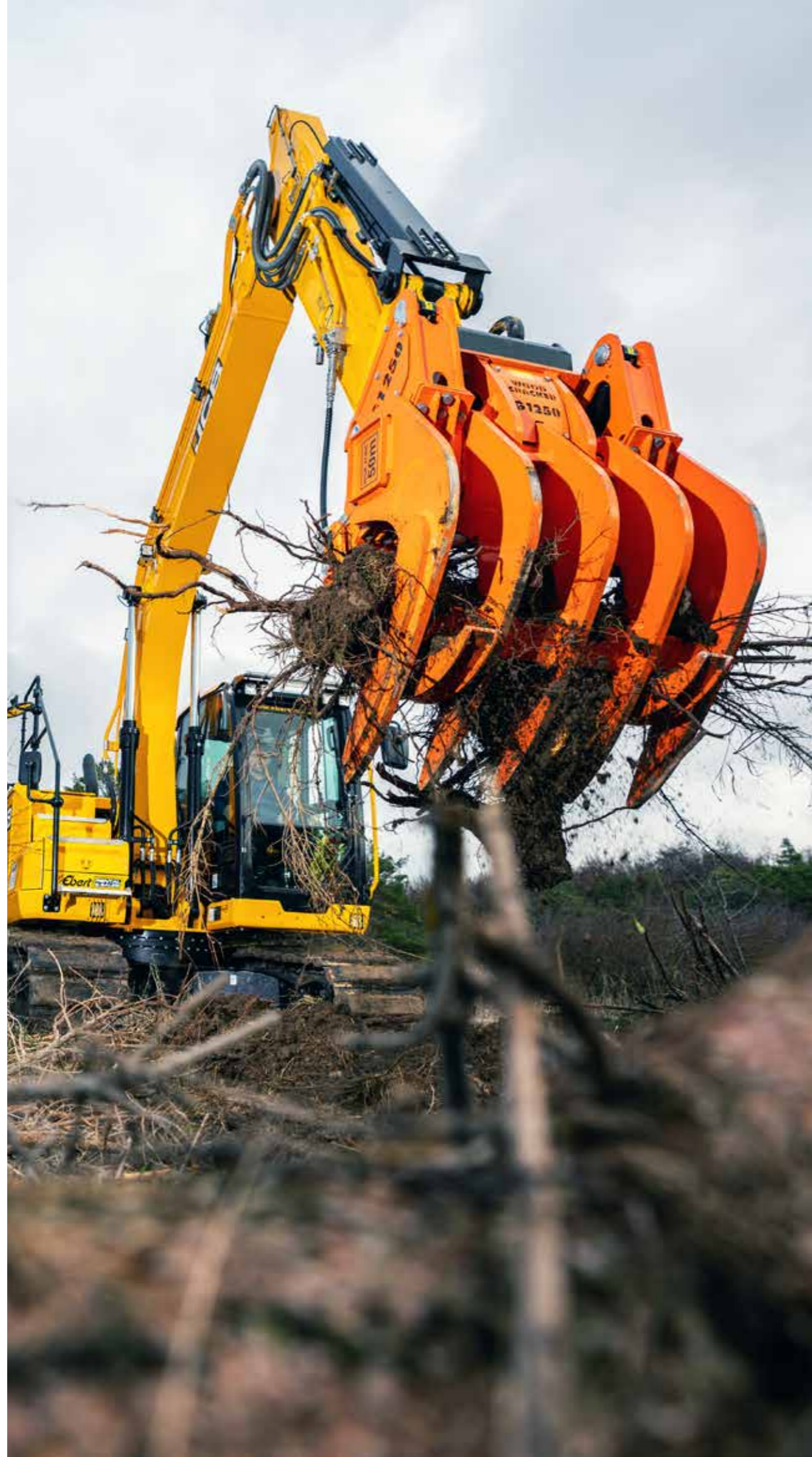


Working in pine forest in South France.



Usage in loose, sandy and erosion-prone soils.

Technical data and illustrations are not binding. Subject to changes for reasons of further development.



PRODUCT INFO



KEY FACTS

- Mountable to all conventional carrier vehicles.
- Efficient construction field clearance.
- Can also be used as gripper for material handling.
- For extracting biomass.
- Ergonomic finger shape.
- Special control of the gripper fingers.
- Robust and long-lasting, low-wear and low-service.
- KTL-primed (cathodic dip-coating) and powder coating.
- Made of high-strength Hardox® steel.

OPTIONS

- Fine rake:
Easy attachment to Woodcracker® G.
Used for thorough and extensive floor cleaning.



fine rake



THE ROBUST CLEARING RAKE FOR BIOMASS HARVESTING.



VIDEO



Woodcracker® G1250 with fine rake.



Clearing and caring of large areas.

TECHNICAL DATA



WOODCRACKER® G	GR 840	G 850	G 1250	G 1650
Working width (mm)	840	850	1250	1650
Deadweight (incl. gripper fingers) (kg)	430	585	1420	1610
Recommended pump flow capacity ¹⁾ (l/min.)	40 - 60	40 - 60	50 - 90	50 - 90
Recommended operating pressure ¹⁾ (bar)	200 - 250	200 - 250	200 - 250	200 - 250
Service weight of carrier vehicle ²⁾ (t)	5 - 12	7,5 - 15	15 - 22	20 - 25
Optional: Gripper fingers	inclusive	•	•	•
Optional: Fine rake	-	•	•	•

¹⁾ Depending on operating mode or equipment. ²⁾ Depending on specifications of the operation vehicle. • available - not available

Technical data and illustrations are not binding. Subject to changes for reasons of further development.

APPLICATION AREAS

- Cleaning and caring for large areas.
- Collecting tree cuts and root materials.
- Landscape maintenance.
- Clearing small rootstocks.
- Supporting follow-up machines (transport and chipping).
- Crop manipulating/handling.



Individual adjustment of the gripper fingers to the harvested material.



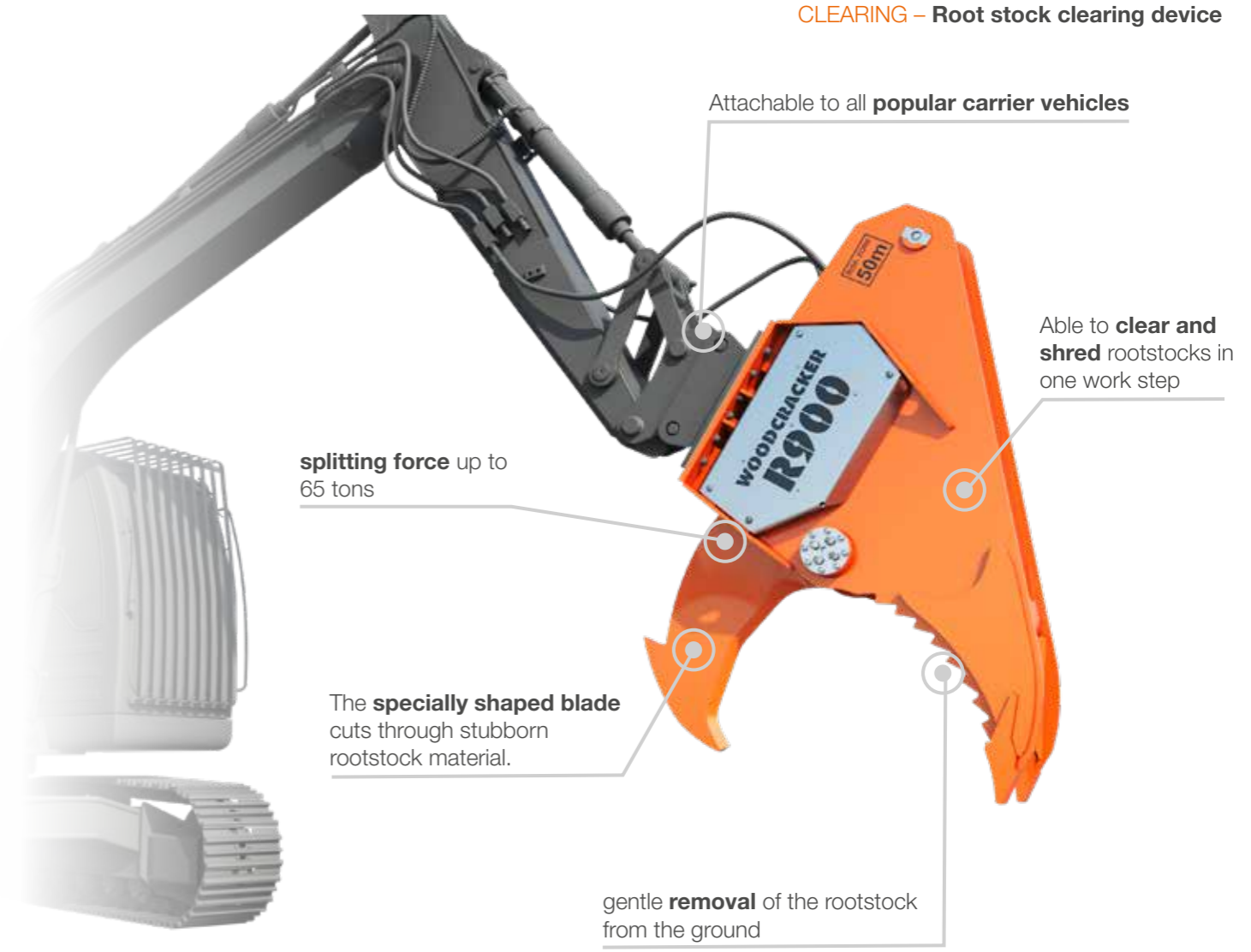
GR840 during rootstock harvesting.



Very large capacity.



CLEARING – Root stock clearing device



KEY FACTS

- Gentle removal of the root stock from the ground, with leaving only a minimal damage to the soil.
- Through additional biomass mobilisation, another source of revenue is generated for the forestry business.
- Available in different sizes suitable for the carrier vehicle.
- Plug-and-play connection.
- Robust and proven technology – Low-wear and low-service.
- Made of high-strength Hardox® steel.

ALTERNATIVE: RIPPER TOOTH

- Fast and cost-efficient ripper tooth.
- For temporary use.
- Available in 2 sizes.



Woodcracker® Ripper Tooth



THE POWERFUL ROOT STOCK CLEARING DEVICE.



Careful removal of the entire rootstock from the ground.



Robust cutting unit.

TECHNICAL DATA



WOODCRACKER® R	R 900	R 1300
Opening stroke (mm)	955	1300
Cutting force (depending on operating pressure) ¹⁾ (t)	up to 45	up to 65
Deadweight (kg)	1200	2100
Recommended pump flow capacity ¹⁾ (l/min.)	100 - 190	120 - 250
Recommended operating pressure (bar) ¹⁾ (bar)	240 - 280	250 - 310
Service weight of carrier vehicle ²⁾ (t)	25	30

¹⁾ Depending on operating mode or equipment. ²⁾ Depending on specifications of the operation vehicle. • available - not available

APPLICATION AREA

- Removal of the entire root stock from the ground.
- Chipping the root stock for further processing by using a shredder.
- Reduction of the transport volume through pre-chipping.
- Large-scale recultivation measures.
- Cleaning the ground to let the plant inventory regrow.



optimized sword



Used for clearing the soil.



Chipping of the harvested material.

Technical data and illustrations are not binding. Subject to changes for reasons of further development.

MULCHER



MULCHER M

MULCHING

cylinder swivel unit
available for mulching hillsides

mulching in
both directions

generously sized bearing

exchangeable attrition skirts

desensitised against foreign objects

ideal working width for road and embankment maintenance



PRODUCT INFO



KEY FACTS

- Robust workmanship, low-wear mulching system.
- Attachment to conventional excavators from 7 to 14 tonnes.
- 2 different mulch systems.
- For keeping forest roads clear.
- Axial piston rotating motor with optimum efficiency in two different sizes possible.
- Protected hydraulic connections.
- KTL-primed (cathodic dip-coating) and powder coating.
- Made of high-strength Hardox® steel.
- Optional: Mic 4.0-capable.



Mulcher at slope maintenance.

THE EXCAVATOR-MOUNTED MULCHER



Mulching in both directions possible - very efficient working method.



For keeping forest roads clear.

TECHNICAL DATA



MULCHER	M 105
Cutting width (mm)	1050
Deadweight (Base - Full equipment) (kg)	315 - 490
Maximum pump flow capacity ¹⁾ (l/min.)	60 - 75
Recommended operating pressure (bar)	280
Service weight of carrier vehicle ²⁾ (t)	7 - 14
Optional: Cylinder swivel unit	•
Optional: Knife mulch unit	•

¹⁾ Depending on operating mode or equipment. ²⁾ Depending on specifications of the operation vehicle. • available - not available

APPLICATION AREAS

- Maintenance of overgrown green areas, if mowing or grazing is unfeasible.
- Maintenance of roadsides and hillsides.
- Maintenance of banks and wooded terrain.



Knife mulch unit

- for woody rank growth
- robust against foreign objects
- low wear



Chain mulch unit

- for grassy rank growth
- clean cutting results through double-cutting system
- low maintenance costs



Easily replaced knives, replaceable attrition skids.



Maintenance of banks and wooded terrain.

Technical data and illustrations are not binding. Subject to changes for reasons of further development.



MIC 4.0 - THE BEGINNING OF DIGITAL COMMUNICATION BETWEEN EXCAVATOR AND ATTACHMENT

The aim is to introduce a standardised, manufacturer- and machine-independent digital language that connects the attachment and the carrier vehicle.



What does MIC 4.0 stand for?

The working group Machines in Construction 4.0 – short MiC 4.0 – is driving the digitization in the construction machinery industry forward. MiC 4.0 is a joint cooperation project of construction machinery manufacturers in the VDMA (Mechanical and Plant Engineering Association) and construction companies in the HDB (Federation of the German Construction Industry). The goal: To introduce a digital language for machines that significantly simplifies operation for users and operators, while ensuring future-proofing. This includes, among other things, identification data such as serial numbers, tool types, as well as status and control data, which are exchanged in real-time. A comprehensive security concept ensures that this communication is reliable and confidential.

MiC 4.0 in combination with our WOODCRACKER®

Trials are already underway in which excavator-compatible Woodcracker have been equipped with MIC 4.0. This technology will be further integrated into our product portfolio in the future.



KTL - CATHODIC DIP PRIMING AND POWDER COATING

The right surface treatment ensures long-lasting protection. WESTTECH relies on fully automated processes in priming and painting in order to achieve a quality standard that is otherwise only common in the automotive industry!



The individual steps of this ultra-modern process:

1. Surface preparation (Blasting)

The Woodcracker components are cleaned of all impurities using steel shot blasting.

2. Pretreatment

In the individual dip tanks, the single components are degreased, rinsed, activated and coated with a zinc phosphate coating.

3. Rinsing

After two further rinsing processes, the surfaces are passivated and rinsed with ultrapure water.

4. Priming

Next, the electrostatic cathodic dip coating is applied, where the Woodcracker components are completely immersed in the paint.

5. First baking

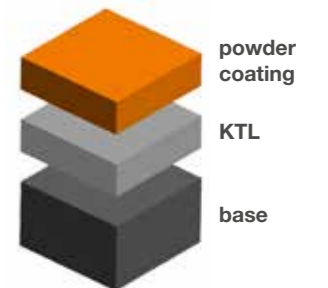
The primer is then baked at a temperature of 200 degrees.

6. Top Coat

The top coat is applied by using powder coating. The used powder materials are those that are ideally suited for outdoor use.

7. Final baking

The powder coating finish needs to be baked at 210 degrees to achieve the best possible quality.



Advantages:

- Best corrosion protection
- Even layer buildup
- gapless coating of all cavities
- The most environmentally friendly painting method, as no solvents are used.

WORKING EFFICIENTLY. WORLDWIDE.

**NEXT
TECH**

MADE IN AUSTRIA

WORLDWIDE, PROS TRUST THE EFFICIENT FORESTRY MACHINES OF WESTTECH:

- Farmers and rangers
- Contractors for-hire
- Excavator and construction companies
- Large land owners
- Road and railway network maintenance companies
- Power utility operators
- River engineering offices
- Building departments
- Municipality
- Military



2005



Original Splitter tong

WOODCRACKER STORY



Founder & CEO Ing. Werner Steininger



20 WESTTECH WOODCRACKER



1000 C350 in front of the entire team



Woodcracker Story

2025



WOODCRACKER®



EN_2025/03



WESTTECH



Westtech Maschinenbau GmbH, 4731 Prambachkirchen, Austria, Industriestraße 1

Tel. +43 (0)-7277-27730, e-mail: office@westtech.at, www.westtech.at